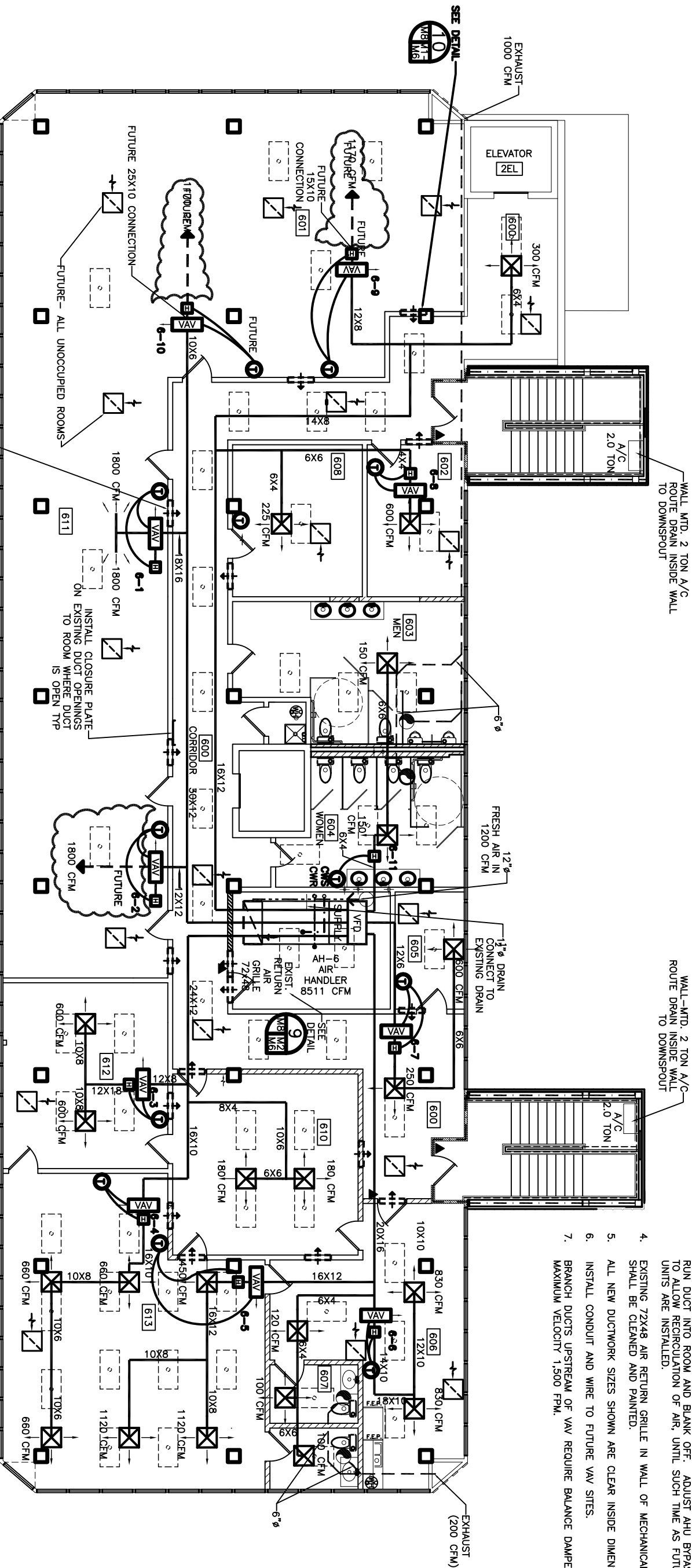


- NOTES:
- EACH ROOM TO HAVE AN OPENING BETWEEN ROOM CEILING SPACE AND HALL CEILING FOR RETURN AIR (MIN. 1'-32X12).
  - HVAC DUCTS ARE DRAWN DIAGRAMMATICALLY. CONTRACTOR TO INSTALL TO MEET EXISTING CONDITIONS.
  - WHERE DUCTS AND/ OR VAV BOXES ARE SHOWN AS FUTURE, RUN DUCT INTO ROOM AND BLANK OFF. ADJUST AHU BYPASS TO ALLOW RECIRCULATION OF AIR, UNTIL SUCH TIME AS FUTURE UNITS ARE INSTALLED.
  - EXISTING 72X48 AIR RETURN GRILLE IN WALL OF MECHANICAL ROOM SHALL BE CLEANED AND PAINTED.
  - ALL NEW DUCTWORK SIZES SHOWN ARE CLEAR INSIDE DIMENSIONS.
  - INSTALL CONDUIT AND WIRE TO FUTURE VAV SITES.
  - BRANCH DUCTS UPSTREAM OF VAV REQUIRE BALANCE DAMPERS. MAXIMUM VELOCITY 1,500 FPM.



SIXTH FLOOR MECHANICAL PLAN  
SCALE: 3/16" = 1'-0"

LEGEND

- NEW HVAC SUPPLY DUCT
- NEW EXHAUST DUCT
- NEW HVAC REGISTER 24 X 24, TTUS #TMSA-AA

- THERMOSTAT
- ELECTRIC DUCT HEATER
- VARIABLE AIR VOLUME DAMPER
- EXHAUST BLOWER
- VARIABLE FREQUENCY DRIVER

- RETURN AIR GRILLE TO BE TTUS #50 W 1/2 X 1/2 CORE 500 FPM MECH. VEL., TOT. PRESS. .032" H2O 24 X 24
- RETURN AIR CASSED OPENING IN WALL - (ROOM TO CEILING) - TO EQUAL 200 SQ. IN.

HVAC  
REVISED: 11-05-07ab  
REVISED: 06-04-07ab  
REVISED: 05-10-07ab  
REVISED: 05-02-07ab  
REVISED: 04-09-07ab  
REVISED: 03-30-07ab  
REVISED: 03-22-07

6TH FLOOR HVAC EQUIPMENT - VAV & HEATERS					
ROOM	VAV NO.	COOL. MBH	COOL. CFM	HEATING MBH	HEATING KW
611	6-1	78	3,600	14	4
612	6-2	39	1,800	6	2
613	6-3	26	1,200	5	2
614	6-4	43	1,980	7	2
615	6-5	48	2,240	6	2
616	6-6	36	1,660	9	3
617	6-7	18	860	5	2
618	6-8	13	600	3	1
619	6-9	25	1,170	3	1
620	6-10	25	1,170	3	1
621	6-11	-	-	6	2

\* CARRIER PART NUMBERS OR EQUAL.